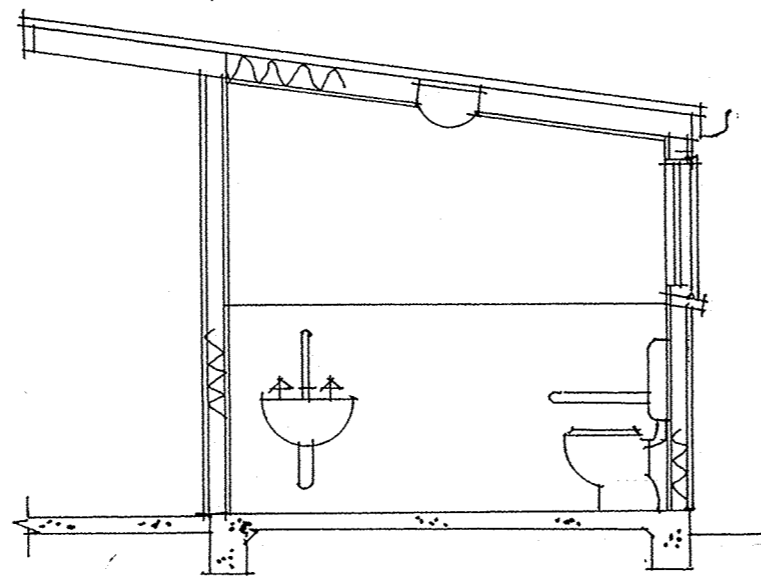
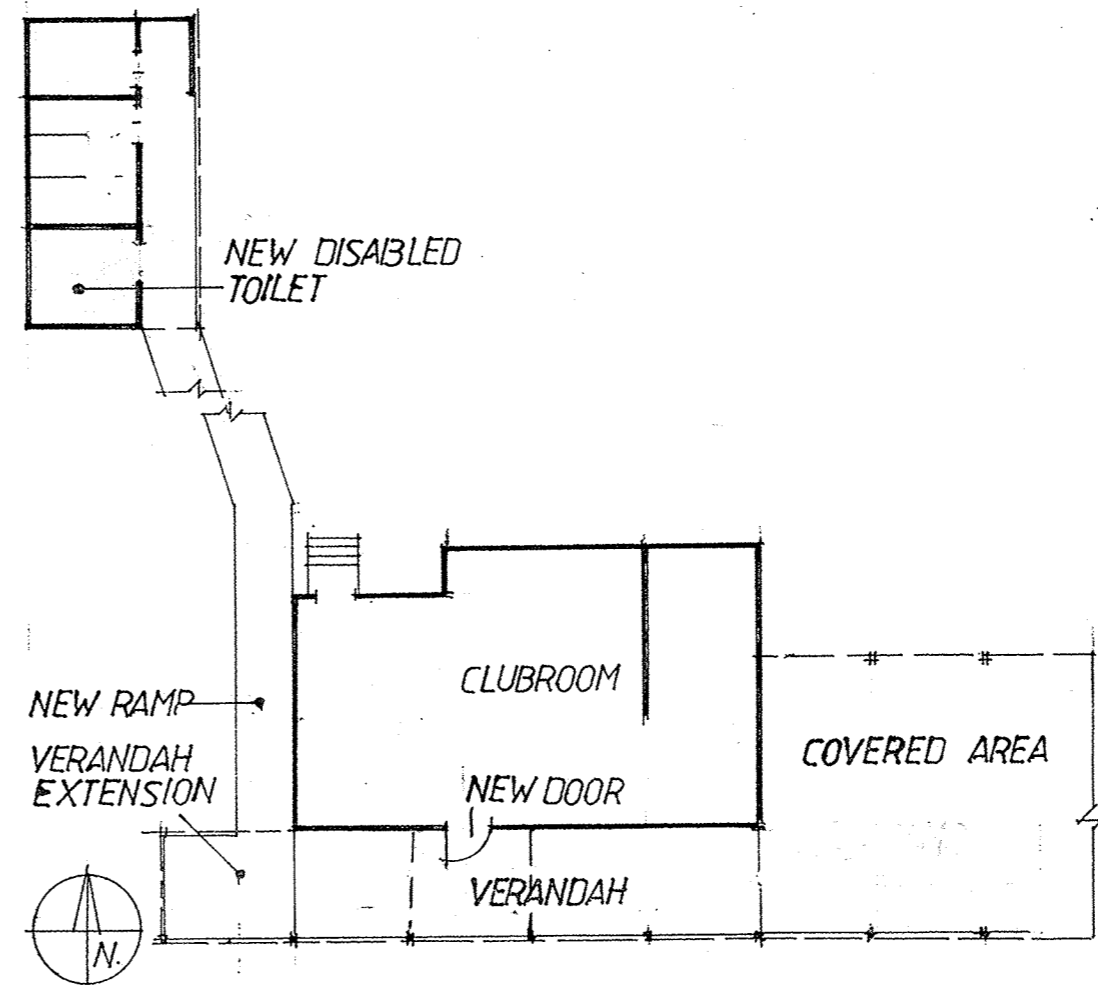


DISABLED TOILET
PLAN 1:50



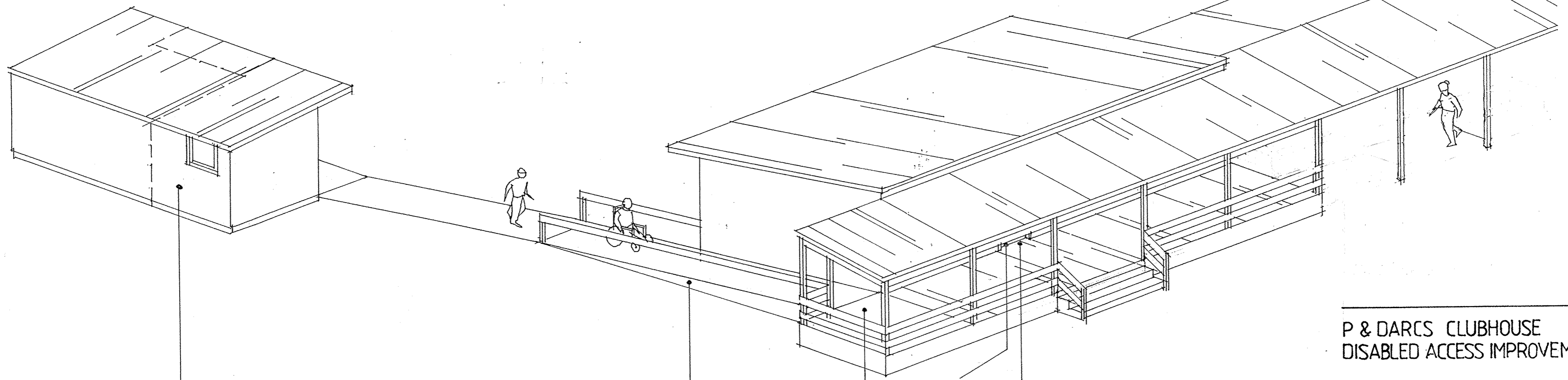
SECTION A.A.



SITE PLAN 1:200

DISABLED TOILET
Construct disabled toilet adjoining existing toilet, in accord with AS1428 "Design for Access and Mobility". Modify existing path as required.
Floor Sheet vinyl on RC slab.
Walls Colorbond sheet on steel frame to match exist, lined with painted waterproof plasterboard and sheet laminate or wall tiling to 1500 ht.
 Al. frame Louvre window with screen.
Roof Zincalume on steel frame to match exist, lined with painted plasterboard. Eaves overhang on N side to match exist.
Insulation Insulation batts to walls and ceilings as required.
Fittings Fibreglass shower cubicle with H&C supply.
 Basin with H&C supply.
 WC with grab rails
 Ceiling mounted light/ extract fan/ heater.

ALTERATIONS TO CLUBHOUSE
Fit new timber ramps and handrails to verandah for disabled access
 Fit new entry door to South wall as shown, 970 width, for disabled access.
 Extend verandah at West end, regrade floor to remove door step.



NEW DISABLED TOILET

NEW 1 IN 14 RAMP
ISOMETRIC VIEW 1:100

VERANDAH EXTENSION

NEW DOOR 970 W

REGRADE FLOOR TO REMOVE STEP

**P & DARCS CLUBHOUSE
DISABLED ACCESS IMPROVEMENTS**

3.7.08

D. SIMPSON